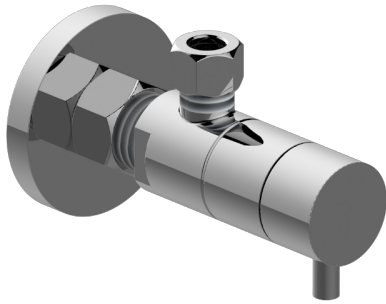


## Angle Stop with Decorative Handle



- Quarter turn ceramic disc cartridge
- 5/8" OD inlet
- 3/8" OD outlet

- ADA

- 24K Polished Gold
- 24K Brushed Gold
- Brushed Brass PVD®
- Architectural Black™
- Brushed Nickel
- Brushed Onyx PVD®
- Rose Gold / Brushed Copper PVD®
- Gunmetal PVD®
- Matte Black
- Olive Bronze
- Onyx PVD®
- Polished Brass PVD®
- Polished Chrome
- Polished Nickel
- Rose Gold / Polished Copper PVD®
- Steelnox® (Satin Nickel)
- Architectural White

The technical drawing shows three views of the plate:

- Front View (Top Left):** A circle representing the end view of the plate. The diameter is labeled as  $\varnothing 1-1/8"$  (26mm).
- Top View (Bottom Left):** A rectangle representing the top surface of the plate. The width is labeled as  $\varnothing 1/4"$  (7mm).
- Side View (Right):** A detailed cross-section of the plate. It shows the thickness of the plate as  $2-3/16"$  ( $\varnothing$  55mm). The total length of the plate is  $3-9/16"$  (91mm). The distance from the left edge to the center of the hole is  $1-1/4"$  (32mm). The hole has a diameter of  $1-1/8"$  ( $\varnothing$  28mm). The distance from the right edge of the plate to the center of the hole is  $1-15/16"$  (48mm). The distance from the right edge of the plate to the center of the hole is also labeled as  $1"$  (25mm).