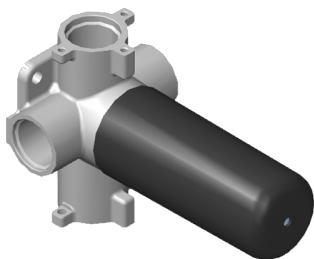


## G-8053

Three-Way Diverter Control Valve WITH Off Function (No Pass-Through)

# GRAFF<sup>®</sup>



### Product Features

- ~11.4 gpm @ 60 psi
- 3/4" universal inlets/outlets with female threads
- Operates one function at a time
- Stacking inlet feature
- Supplied with protective plastic cover
- CALGreen compliant depending on functions

### Available Finishes

\* Special order finish - call for availability