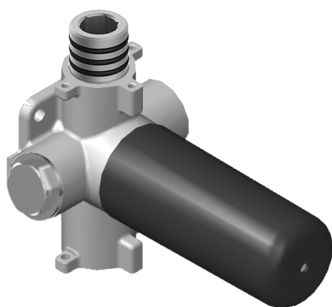


## G-8076

Stop/Volume Control Valve with Pass Through

# GRAFF<sup>®</sup>



### Product Features

- 12.3 gpm @ 60 psi
- 3/4" universal inlets/outlets with female threads
- Stacking inlet and pass-through port feature
- Supplied with protective plastic cover
- CalGreen compliant dependent on functions

### Available Finishes

\* Special order finish - call for availability