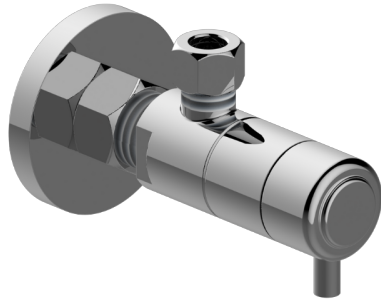


Angle Stop with Decorative Handle



- Quarter turn ceramic disc cartridge
- 5/8" OD inlet
- 3/8" OD outlet

- ADA

- 24K Polished Gold
- 24K Brushed Gold
- Brushed Brass PVD®
- Architectural Black™
- Brushed Nickel
- Brushed Onyx PVD®
- Rose Gold / Brushed Copper PVD®
- Gunmetal PVD®
- Matte Black
- Olive Bronze
- Onyx PVD®
- Polished Brass PVD®
- Polished Chrome
- Polished Nickel
- Rose Gold / Polished Copper PVD®
- Steelnox® (Satin Nickel)
- Architectural White

Technical drawing of the 1/2 inch NPT x 1/2 inch NPT Tee, showing front and side views with dimensions in inches and millimeters.

Front View Dimensions:

- Top Port Diameter: 1-1/8" (28mm)
- Bottom Port Diameter: 1/4" (7mm)

Side View Dimensions:

- Top Port Thread: Pipe 3/8"
- Top Port Diameter: 1-1/8" (28mm)
- Top Port Length: 1-1/4" (32mm)
- Body Diameter: 2-3/16" (55mm)
- Body Length: 1-15/16" (48mm)
- Bottom Port Diameter: 1/2" (25mm)
- Overall Length: 3-9/16" (91mm)
- Flange Thickness: 5/16" (8mm)