

SHOWER
Full Thermostatic Shower System
with Transfer Valve (Rough &
Trim)
GC5.122A-LM40S

GRAFF®



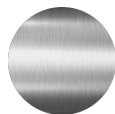
Information

- 3/4" Thermostatic Valve
- 1/2" 4-Port Diverter Valve with 3 outlets and off function
- 8" Showerhead with 12" Arm & Flange
- Swivel Body Sprays (3 pieces)
- Handshower Set w/Wall Bracket
- Showerhead Features No-Clog, Easy-Clean Spray Nozzles
- 3/4" Thermostatic Rough Valve Flow Rate ~18 gpm @60 psi
- Flow rates: showerhead ≤ 1.8 max gpm, handshower ≤ 1.5 max gpm, body sprays ≤ 1.5 max gpm each

Finishes



Polished
Chrome



Steelnox®
(Satin Nickel)



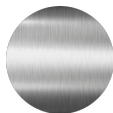
Information

- 18.4 gpm @ 60 psi
- 3/4" universal inlets/outlets with female threads
- Built-in service stops
- Complete serviceability from front of all units
- Supplied with protective plastic cover
- Thermostatic valve uses a paraffin wax cartridge

Finishes



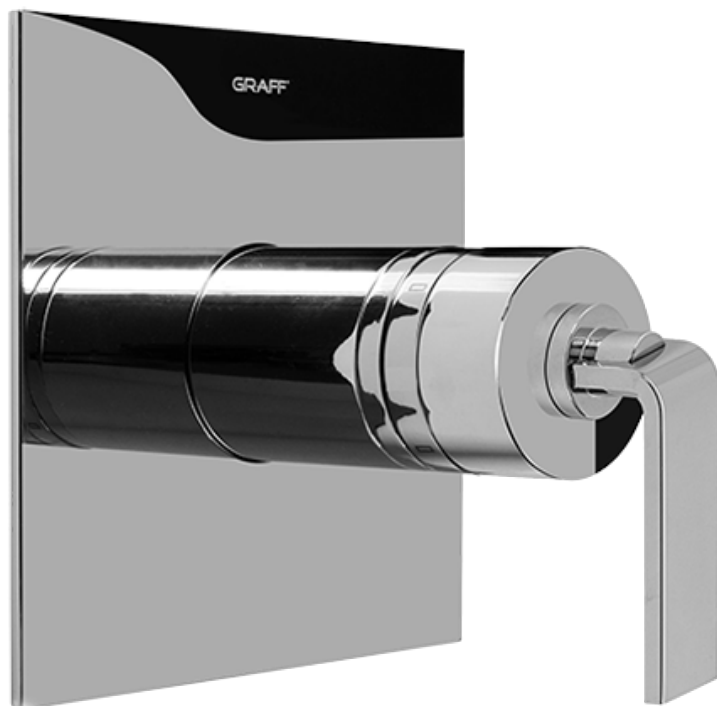
Polished
Chrome



SteelInox®
(Satin Nickel)

SHOWER
Immersion SOLID Trim Plate
w/Handle
G-8041-LM40S-T

GRAFF®



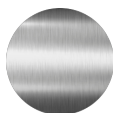
Information

- Single metal handle
- Decorative trim plate
- Use with G-8000 or G-8005 thermostatic rough valve
- To complete package, you must order rough valve
- ADA

Finishes



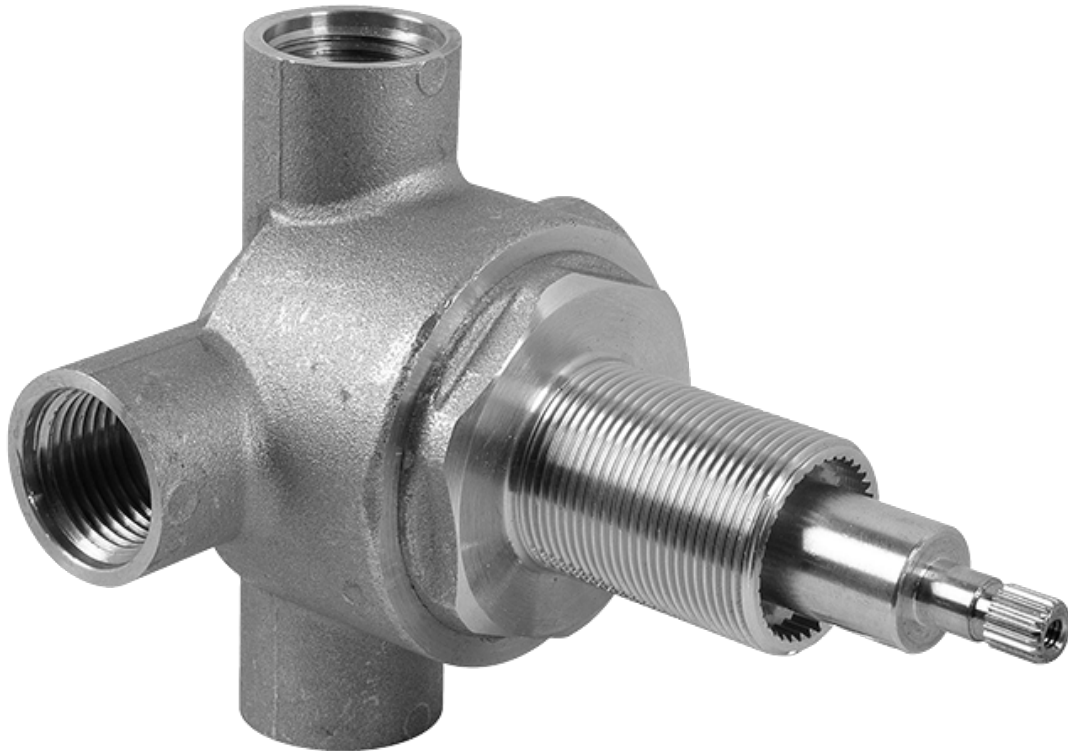
Polished
Chrome



Steelnox®
(Satin Nickel)

SHOWER
3-Way High Flow Transfer Rough
Valve WITH off function
G-8050

GRAFF®



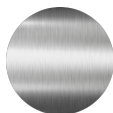
Information

- Intended for use with Thermostatic Shower Systems
- 1/2" 3-way diverter valve with 3 outlets and off function
- Universal inlets/outlets with female threads
- Operates one function at a time
- Supplied with protective plastic cover
- CALGreen compliant depending on functions
- CALGreen

Finishes



Polished
Chrome



Steelinox®
(Satin Nickel)

SHOWER
Immersion Transfer Valve Trim
Plates and Handle
G-8066-LM40S-T

GRAFF®



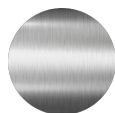
Information

- Single metal lever handle
- Decorative trim plate WITH off function
- Use with G-8050 (4-port thermostatic diverter valve w/stop)
- To complete package, you must order rough diverter valve
- ADA

Finishes



Polished
Chrome



Steelnox®
(Satin Nickel)

SHOWER
8" Square Brass Showerhead
G-8438

GRAFF®



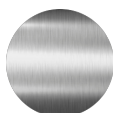
Information

- 1/4" thick
- 144 no-clog, easy-clean rubber spray nozzles
- Recommended use with ceiling shower arm
- Recommended for use at no more than 10 degrees tilt
- Showerhead flow rate ≤ 1.8 max gpm
- CALGreen

Finishes



Polished
Chrome



Steelnox®
(Satin Nickel)

G-8438

Aqua-Sense Collection

Contemporary 8" Square Showerhead

GRAFF[®]
CUTTING EDGE DESIGN



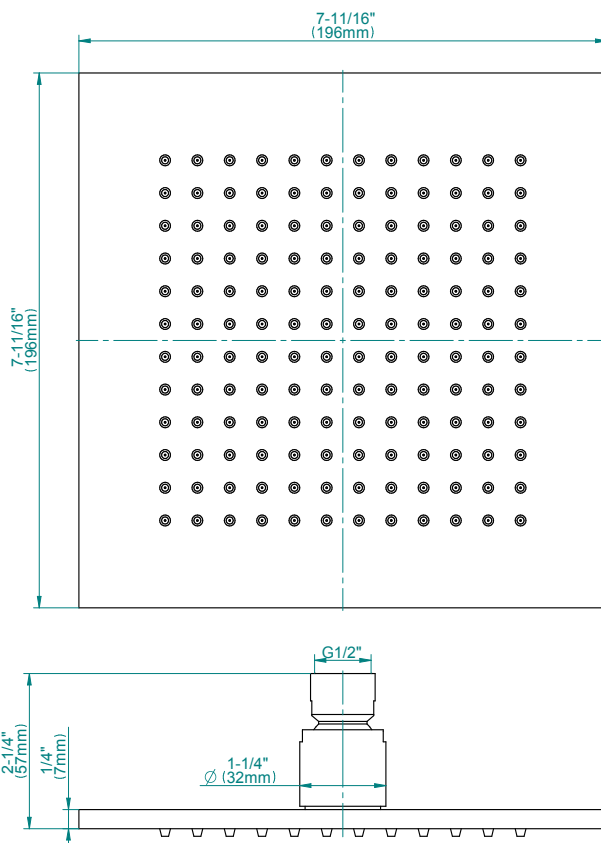
Product Features

- 1/4" thick
- 144 no-clog, easy-clean rubber spray nozzles
- Showerhead flow rate ≤ 1.8 max gpm

Available Finishes

- Polished Chrome
G-8438-PC
- Brushed Nickel
G-8438-PN
- Polished Nickel
G-8438-BNi
- Unfinished Brass*
G-8438-UB*
- Steelnox
G-8438-SN
- Olive Brass*
G-8438-OB*
- Architectural Black with Chrome Accents*
G-8438-PC/BK*
- Gold*
G-8438-AU*
- Brushed Gold*
G-8438-BAU

* Special order finish- call for availability



The measurements shown are for reference only. Products and specifications shown are subject to change without notice. Revised 12/2017

www.graff-designs.com | phone: 800-954-4723

SHOWER
Square Flush Mount Body Spray
w/ Solid Brass Swivel Head
G-8497

GRAFF®



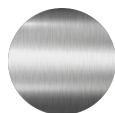
Information

- 12 no-clog, easy-clean silicon jets
- Metal ball-joint allows for 18° angle adjustment of body spray
- Brass wall escutcheon and flush-mounted trim
- 1/2" NPT female thread inlet
- Body spray flow rate ≤ 1.5 max gpm

Finishes



Polished
Chrome



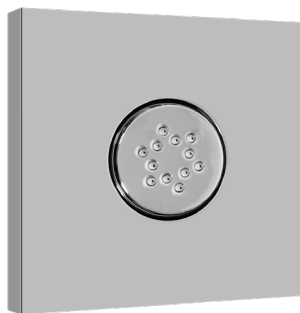
Steelnox®
(Satin Nickel)

G-8497

Shower Components

Contemporary Flush-Mount Body Spray with Solid Brass Swivel Head

GRAFF®



Product Features

- 12 no-clog, easy-clean silicone jets
- Metal ball-joint allows for 18° angle adjustment of body spray
- Brass wall escutcheon and Flush-mounted trim
- 1/2" NPT female thread inlet
- Body spray flow rate ≤ 1.5 max gpm

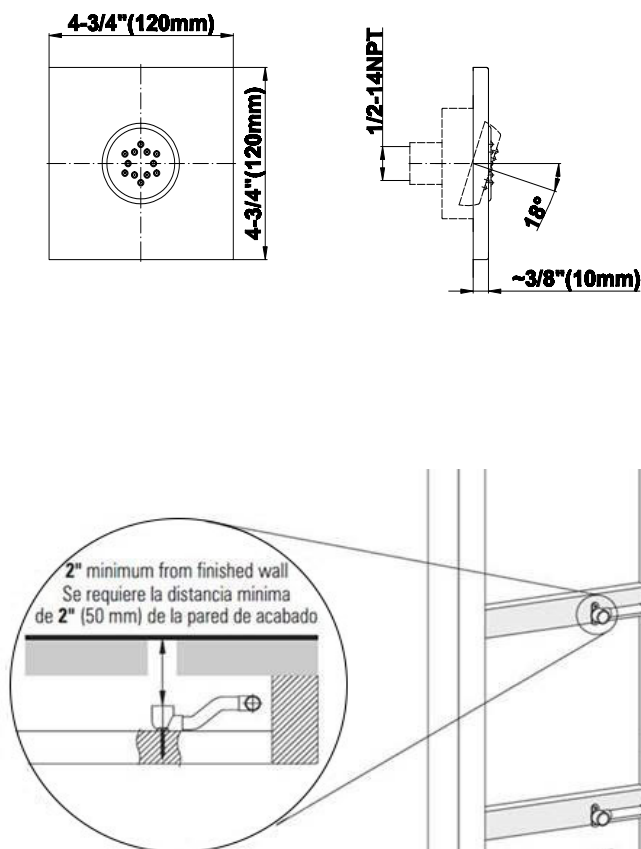
Warranty

- Limited lifetime warranty

For complete warranty information go to www.graff-designs.com/en-nam/warranty

Available Finishes

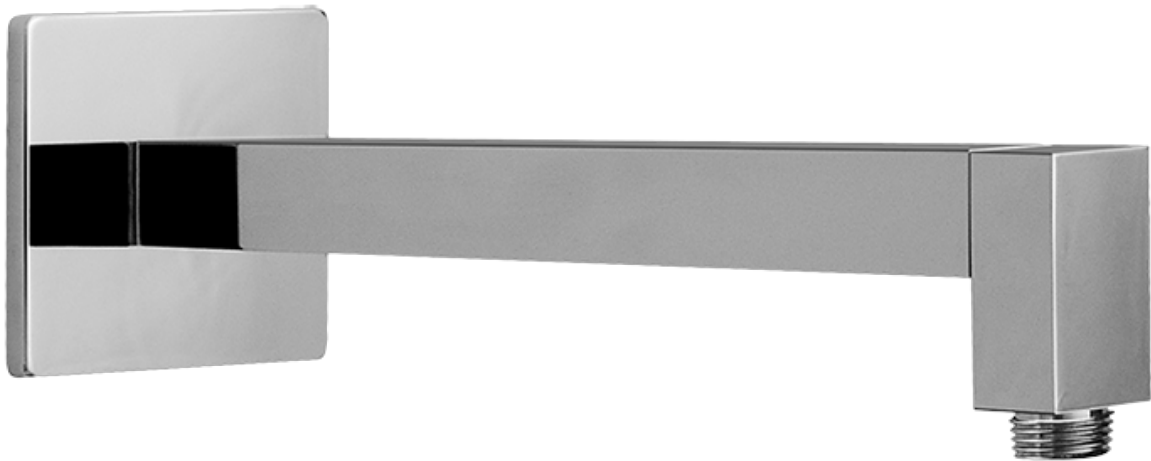
- Polished Chrome
G-8497-PC
- Polished Nickel
G-8497-PN
- Brushed Nickel
G-8497-BNi
- Matte Black*
G-8497-MBK*
- Architectural Black*
G-8497-BK*
- Architectural White*
G-8497-WT*
- Olive Brass
G-8497-OB
- Gunmetal*
G-8497-GM*
- Steelnox
G-8497-SN
- OR'osa PVD*
G-8497-RG*
- Onyx PVD*
G-8497-OX*
- Polished Brass PVD*
G-8497-PB*
- Brushed Brass PVD*
G-8497-BB*
- Brushed Gold*
G-8497-BAU*
- Gold*
G-8497-AU*
- Gunmetal Distressed*
G-8497-GMD*



The measurements shown are for reference only. Products and specifications shown are subject to change without notice. Revised 4/2019
www.graff-designs.com | phone: 800-954-4723

SHOWER
Contemporary 12" Shower Arm
G-8530

GRAFF®



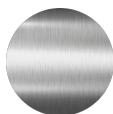
Information

- Includes arm and square flange
- 1/2" NPT male thread inlet
- For use with all showerheads (especially G-8438)

Finishes



Polished
Chrome



Steelnox®
(Satin Nickel)

SHOWER
59" Shower Hose
G-8605

GRAFF®



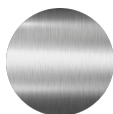
Information

- Brass spiral flexible hose with conical nut

Finishes



Polished
Chrome



Steelinox®
(Satin Nickel)

G-8605

Shower Components 59" Shower Hose

GRAFF®



Product Features

- Brass spiral flexible hose with conical nut

Warranty

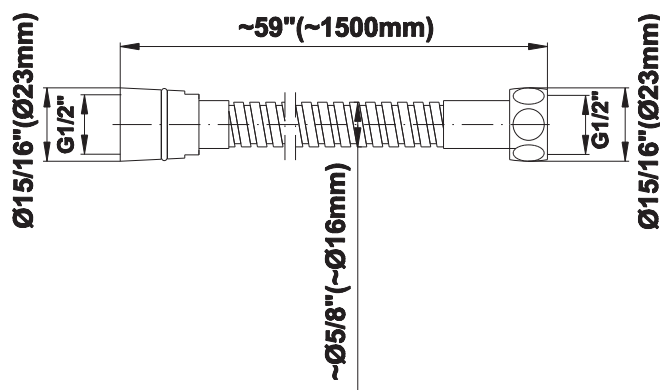
- Limited lifetime warranty

For complete warranty information go to
www.graff-designs.com/en-nam/warranty

Available Finishes

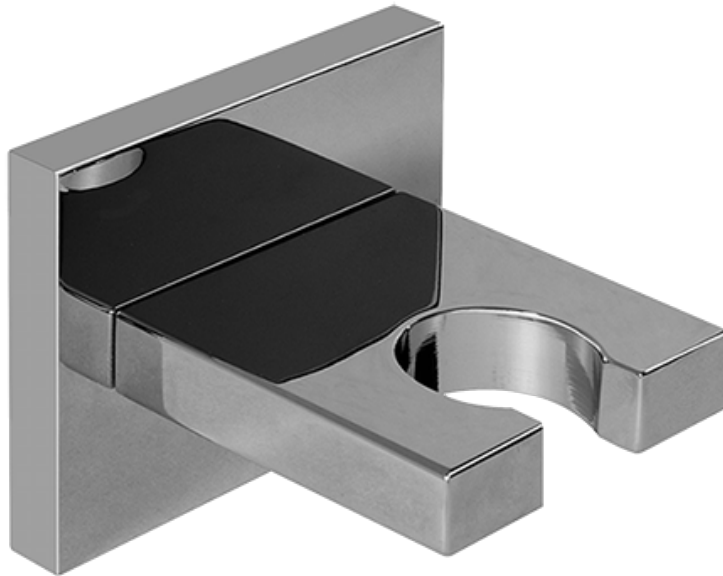
- Polished Chrome
G-8605-PC
- Polished Nickel
G-8605-PN
- Brushed Nickel
G-8605-BNi
- Unfinished Brushed Brass*
G-8605-UBB*
- Unfinished Brass*
G-8605-UB*
- Matte Black*
G-8605-MBK*
- Architectural Black*
G-8605-BK*
- Architectural White*
G-8605-WT*
- Olive Brass*
G-8605-OB*
- Gunmetal*
G-8605-GM*
- Vintage Brushed Brass*
G-8605-VBB*
- Steelnox (Satin Nickel)
G-8605-SN
- 24K Brushed Gold*
G-8605-BAU*
- 24K Gold*
G-8605-AU*
- Gunmetal Distressed*
G-8605-GMD*

* Special order finish- call for availability



SHOWER
Contemporary Square Wall
Bracket for Handshower
G-8632

GRAFF®



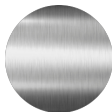
Information

- Solid brass construction

Finishes



Polished
Chrome

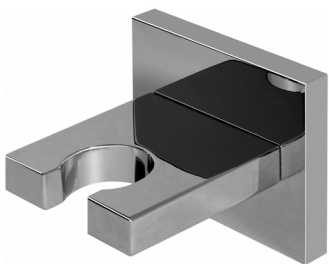


Steelnox®
(Satin Nickel)

G-8632

Contemporary Square Wall Bracket for Handshower

GRAFF[®]
CUTTING EDGE DESIGN



Product Features

- Solid brass construction

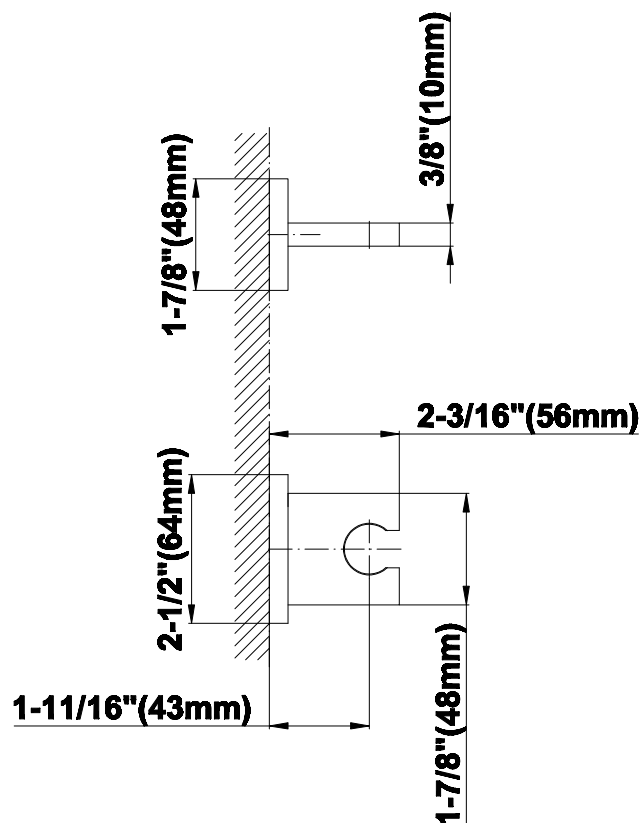
Available Finishes

- Polished Chrome
G-8632-PC
- Steelnox[®]
G-8632-SN

Warranty

- Limited lifetime warranty

For complete warranty information go to
<http://www.graff-faucets.com/en/info/faqs>



SHOWER
Contemporary Square Wall Supply
Elbow
G-8633

GRAFF®



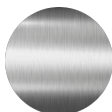
Information

- 1/2" NPT female thread inlet

Finishes



Polished
Chrome



Steelnox®
(Satin Nickel)

G-8633

Contemporary Square Wall Supply Elbow



Product Features

- 1/2" NPT female thread inlet

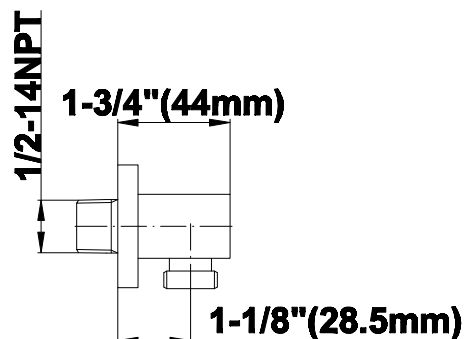
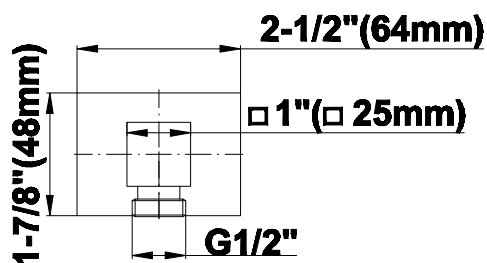
Available Finishes

- Polished Chrome
G-8633-PC
- Steelnox[®]
G-8633-SN
- Architectural Black w/Chrome
Accents
G-8633-PC/BK

Warranty

- Limited lifetime warranty

For complete warranty information go to
<http://www.graff-faucets.com/en/info/faqs>



SHOWER
Contemporary Rectangle
Handshower
G-8654

GRAFF®



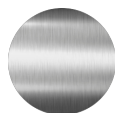
Information

- Smooth, all-metal handle
- Shower hose not included
- Handshower flow rate ≤ 1.5 max gpm
- Includes internal backflow preventer
- CALGreen

Finishes



Polished
Chrome



Steelnox®
(Satin Nickel)

G-8654

Shower Components

Contemporary Rectangle Handshower

GRAFF®



Product Features

- Smooth, all-metal handle
- Shower hose not included
- Includes internal backflow preventer
- Handshower flow rate ≤ 1.5 max gpm

Warranty

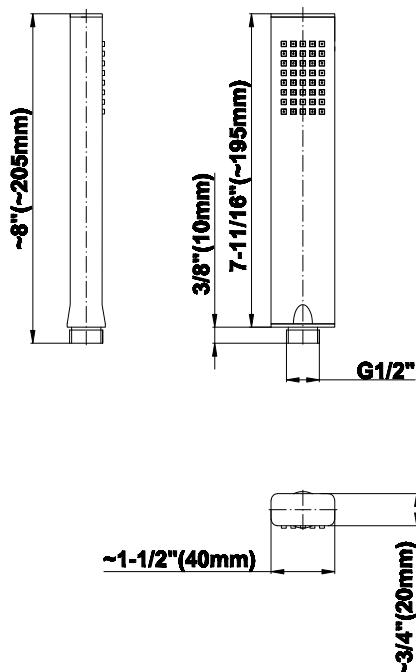
- Limited lifetime warranty

For complete warranty information go to
<https://www.graff-designs.com/en/info/faqs>

Available Finishes

- Polished Chrome
G-8654-PC
- Polished Nickel
G-8654-PN
- Brushed Nickel
G-8654-BNi
- Matte Black*
G-8654-MBK*
- Architectural Black*
G-8654-BK*
- Architectural White*
G-8654-WT*
- Steelnox (Satin Nickel)
G-8654-SN
- Olive Bronze*
G-8654-OB*
- Gunmetal*
G-8654-GM*
- OR'osa PVD*
G-8654-RG*
- Brushed OR'osa PVD*
G-8654-BRG*
- Onyx PVD*
G-8654-OX*
- Brushed Onyx PVD*
G-8654-BOX*
- 24K Brushed Gold*
G-8654-BAU*
- 24K Gold*
G-8654-AU*

* Special order finish- call for availability



The measurements shown are for reference only. Products and specifications shown are subject to change without notice. Revised 11/2019

www.graff-designs.com | phone: 800-954-4723