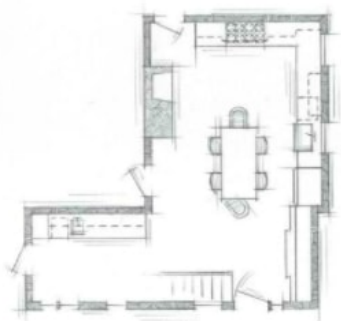




the plan



A farm table—rather than a typical island—anchors this inviting, eat-in kitchen. The U-shape design eases traffic flow. An adjacent 76-square-foot laundry room was converted into a butler's pantry, which is equipped with multiple appliances and abundant storage to minimize mess in the main kitchen.

THE FREQUENT WEEKEND

visitors to Yvonne and Neil O'Kane's Westport, Connecticut, home head straight to the kitchen table. There, they're likely to find Yvonne preparing a party menu, Neil reading the paper, and the kids enjoying snacks and texting friends.

Such a scene is exactly what the O'Kanes envisioned when they purchased the charming, but at the time outdated, 1908 home. They were drawn to the home's heritage details, such as a back staircase and a kitchen fireplace, but they knew it would take some design dexterity to turn the existing kitchen into the family hub they desired. "I wanted a kitchen that was luxurious but also easy to live in, work, and clean," Yvonne says. Never a fan of kitchen islands, Yvonne also wanted the space to be large enough to accommodate the family's much-loved farmhouse table—a primary gathering place and the true heart of the home.

Enter kitchen designer Veronica Campbell of Deane Kitchens and lifestyle expert Mar Jennings. Working from Jennings' six core design principles

“The glossy surfaces showcase beautiful details and have a reflective quality similar to a body of water.”

—YVONNE O'KANE, HOMEOWNER



OPPOSITE: Pretty pink peonies shine bright against the glistening backsplash and white lacquer upper cabinets. Pronounced shelf brackets add timeless allure. THIS PHOTO: The royal blue range—the focal point of the kitchen—inspired the palette. Together with the green and white, it's reminiscent of nature and the outdoors. Open shelves show off Yvonne's collection of water pitchers and cookbooks, while lower cabinet drawers offer easy access to items stored inside.



THIS PHOTO: Natural light from the window frames the apron-front fireclay sink. Flanking the sink, a dishwasher and a trash receptacle hide behind cabinet fronts. OPPOSITE, TOP LEFT: A pot-filler faucet adds convenience at the range. OPPOSITE, TOP RIGHT: The curved lines of the custom cabinetry inserts create "a piece of jewelry for the kitchen," lifestyle expert Mar Jennings says. OPPOSITE, BOTTOM LEFT: A wine fridge, bar sink, and concealed second dishwasher are practical additions in the adjacent butler's pantry, which was formerly a laundry room. OPPOSITE, BOTTOM RIGHT: Polished-nickel hardware dresses up deep drawers topped with custom-mixed green lacquer paint.





THIS PHOTO: The fireplace, original to the house, got a total makeover, including a new shape, mantel, and sconces, and a coat of blue-gray paint that complements the mosaic-tile backsplash and range.



LEFT: A custom hutch, constructed to fit beneath the slanted ceiling, provides beautiful storage for kitchen linens, cutting boards, and large trays and bowls. The glass door leads to a large outdoor dining area.

DESIGNER INSIGHTS: MAR JENNINGS' SIX CORE DESIGN PRINCIPLES

Follow these foolproof design principles for a perfect look:

- **Represent *Mother Nature*:** In this kitchen, the woven and wood chairs, the heavy wood farm table, and the base cabinetry's sage green paint bring the outdoors in.
- **Embrace light and reflection:** Omitting window treatments allows natural light to flow through the space. Well-positioned fixtures illuminate the space and provide focused task light where needed.
- **Use natural materials and colors:** A mix of white, blue, gray, and green references homeowner Yvonne O'Kane's love of gardens and the outdoors. A royal blue range forms a striking focal point.
- **Repurpose:** The fireplace, back staircase, and farm table pay homage to the past while embracing the family's lifestyle.
- **Repeat shapes and patterns:** The curved designs of the custom cabinetry inserts and backsplash tile are picked up by the bell jar pendants, sconces, and even Yvonne's water pitcher display, creating a cohesive look.
- **Consider size and scale:** Large pendants complement the scale of the chunky table. Large-format floor tiles balance the delicate detailing of the mosaic-tile backsplash.

(see Designer Insights), the team designed a light, airy space that marries the warmth of the lovingly used table with the luxe amenities of a modern kitchen.

A royal blue La Cornue range anchors one end of the kitchen. Its gorgeous hue inspired the room's soft blue-and-green color palette—a perfect complement to the earthiness of the farm table and the wood-look textured ceramic tile floor, and a striking contrast to the perimeter's gleaming finishes. Custom lacquer cabinets finished in bright white and sage green and easy-to-clean white Glassos countertops glisten like wet paint and reflect the shimmering backsplash of blue, gray and white tile. The existing fireplace was boxed off and painted a deep blue-gray to give it a vibrant look, while high-gloss white paint on moldings and mantels provides a lustrous sheen that makes visitors want to reach out and touch.

"The glossy surfaces showcase beautiful details and have a reflective quality similar to a body of water," Yvonne says, "It's inviting, like my table. It draws you in and makes you want to stay awhile—and people do."

Resources begin on page 124.