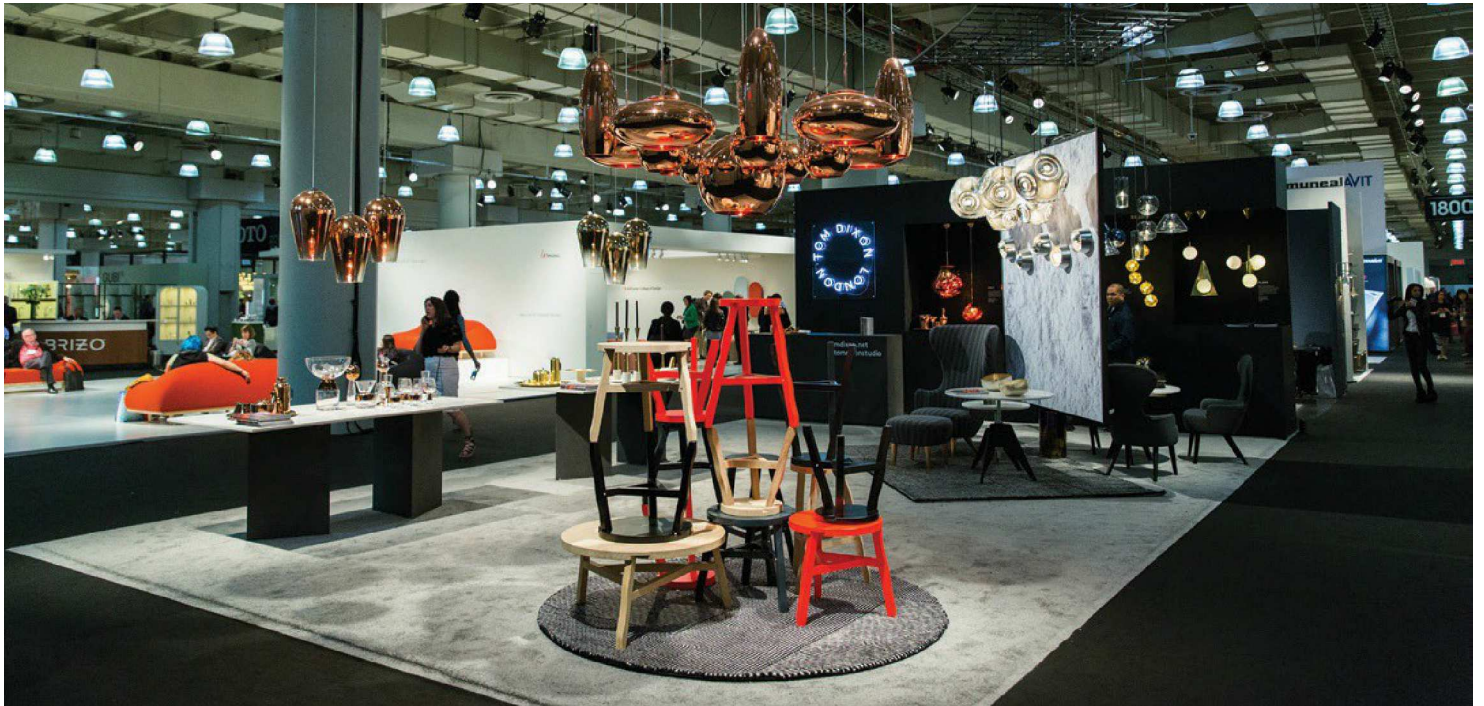


Contemporary Design Exhibited at ICFF in New York

More than 750 exhibitors from 30 countries displayed new products for commercial and residential interiors



PHOTOGRAPHY: JENNA BASCOM (THIS PAGE)

Contemporary works from more than 750 exhibitors were on display at the Jacob K. Javits Center. Pictured above is the Tom Dixon booth. The event attracted nearly 35,000 architects, interior designers, developers, retailers, and manufacturers (right). An opening night party was held in the Abby Aldrich Rockefeller Sculpture Garden at the Museum of Modern Art (far right).



Showcasing the convergence of global design, the 28th edition of ICFF was held May 14 through 17 at the Jacob K. Javits Center in New York. Produced by Emerald Expositions, the publisher of *Contract*, the show attracted an international selection of nearly 35,000 architects, interior designers, developers, retailers, and manufacturers.

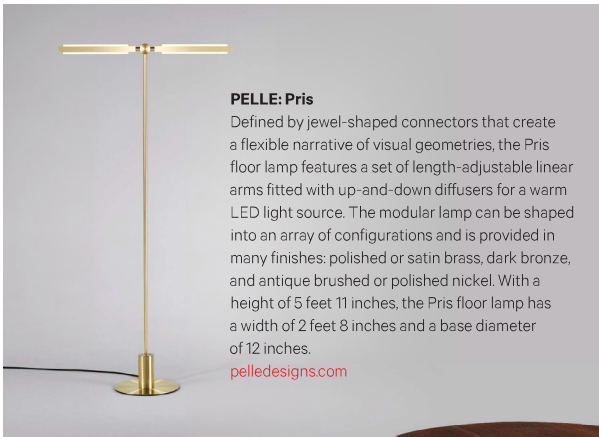
With more than 750 exhibitors from 30 countries, ICFF is North America's largest design event for interiors. Contemporary works were exhibited in the categories of furniture, lighting, carpet, flooring, textiles, wallcoverings, accessories, kitchen, and bath (see select highlights, opposite).

An opening night party was held at the Museum of Modern Art's Abby Aldrich Rockefeller Sculpture Garden and was headlined by the band Rough, which is led by celebrated designer and bassist Tom Dixon. Programs during the show included ICFF Talks, an

educational series that covers a range of current topics in the industry, and ICFF Studio, a juried platform for young designers to present prototypes to manufacturers. ICFF's education partner, the American Society of Interior Designers, presented CEU-approved programming for design professionals.

Contract Editor in Chief John Czarnecki was among the five editors to select the winners of the 2016 ICFF Editors' Awards, which honored 11 designers and products, as well as one winner in the annual ICFF Schools exhibition.

The next ICFF in New York is scheduled for May 21–24, 2017, while ICFF Miami will premiere this fall at the Miami Beach Convention Center, October 5–6, 2016. —HAYLEY ARSENAULT



PELLE: Pris

Defined by jewel-shaped connectors that create a flexible narrative of visual geometries, the Pris floor lamp features a set of length-adjustable linear arms fitted with up-and-down diffusers for a warm LED light source. The modular lamp can be shaped into an array of configurations and is provided in many finishes: polished or satin brass, dark bronze, and antique brushed or polished nickel. With a height of 5 feet 11 inches, the Pris floor lamp has a width of 2 feet 8 inches and a base diameter of 12 inches.

pelledesigns.com



Graff Designs: Dressage

The Dressage bathroom furniture collection (left) displays artisanal craftsmanship with an avant-garde aesthetic and includes a bathtub, washbasin, vanity, shelf, towel hooks, drawers, and rotating mirrors. Conceived by Italian design studio Nespoli and Novara, the collection is crafted from Canaletto solid walnut and complemented by Corian DuPont surfaces that were thermo-formed to achieve smooth, rounded edges.

graff-faucets.com

Tronk: Hudson

Combining an industrial structure with modern accents, Tronk's Hudson side table (right) features intersecting metal legs that appear to transform in shape when orbiting the table. A diagonal inlay dissects the slim, gently tapered wood tabletop. The powder-coated base has a height of 23 inches and is available in six color options, including red, green, orange, yellow, white, and black. With an 18-inch diameter, the tabletop comes in either walnut with maple inlay or maple with walnut inlay.

tronkdesign.com



Smedsa Design: ASK

The ASK bench (right) boasts a lightweight and minimalist design well suited for relaxed seating. Caroline Smedsvig designed ASK with mobility in mind, as the separated seats employ a gentle tilting technique that allows for a better ergonomic position. Constructed with natural materials sourced from Norway, ASK is comprised of a white oiled-ash base with lacquered steel and wool upholstery. The bench measures 19 3/4 inches in width, 21 1/2 inches in length, and 34 1/2 inches in height.

smedsadesign.com



it's in to be out

We offer a wide selection of outdoor chairs, tables and lounge items which provide comfort, relaxation and enhance the ambiance of any setting. Through precise construction, choice of materials, demanding tests and standards, our products support heavy-duty use common to the foodservice, hospitality and corporate markets.

emuamericas llc

800.726.0368

www.emuamericas.com

emu[®]
60 years of manufacturing
experience in outdoor furniture.
"Made in Italy" at its best.

