



36



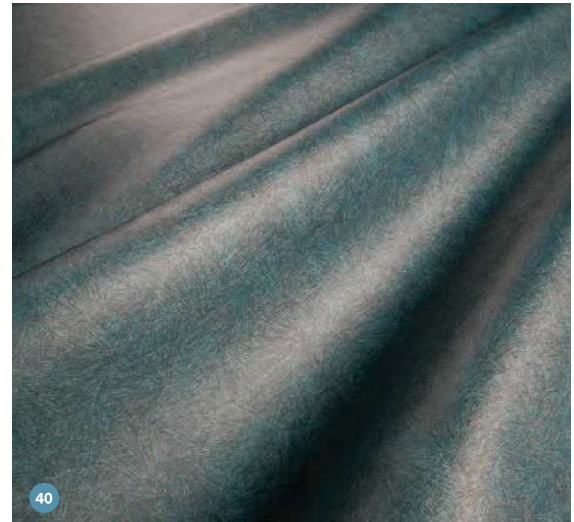
37



38



39



40

36 ENCORE HOSPITALITY CARPET

encorehospitalitycarpet.com
Trend's distressed, vintage look is detailed with subtle geometrics and organic shapes. Part of the Allure collection, the carpet is constructed from 100 percent renewable Zeftron nylon.

37 GRAFF

graff-faucets.com
An angled top edge caps the Dressage free-standing tub's asymmetrical form. Italian design studio Nespoli e Novara teams solid wood with stain-resistant DuPont Corian surfaces in this customizable piece, which is available in six finishes including Canaletto walnut (shown).

38 MDC

mdcwall.com
New York-based interior designer Thom Filicia's first-ever wallcovering collection includes 13 styles printed on 54-in., 20-oz. Type II contract vinyl. Abalone (shown) pairs a geode-inspired design with a subtle metallic sheen. Other patterns in the range include Reedland Lustre, which echoes the look of woven natural materials; Latitude Trellis, which features geometric shapes; and Tussah, which recalls tranquil lakes.

39 EGO PARIS

egoparis.com
French product designer Fabrice Berrux created a series of hexagonal cells in HIVE. Manufactured in the company's factory near Lyon, France, the range consists of an armchair, stool, loveseat, table, half table and sofa. The collection's aluminum frames are offered in 22 powdercoat colors and the batyline backrest is available in a choice of 16 hues.

40 ENDURATEX

enduratex.com
An extension of the Enduraprint rotogravure tri-color print program, Synchronicity has an abrasion resistance rating of 100,000 cycles. The mildew-resistant covering is treated with a proprietary PRODURATEX Plus topcoat and backed with the manufacturer's knit backing. Available in 15 SKUs.